



15 PORTMAN SQUARE, MARYLEBONE W1H

Asking Price £2,450,000 Leasehold

T. +44 (0) 20 7935 0011
E. enquire@napierwatt.co.uk
WWW.NAPIERWATT.CO.UK

NAPIER WATT

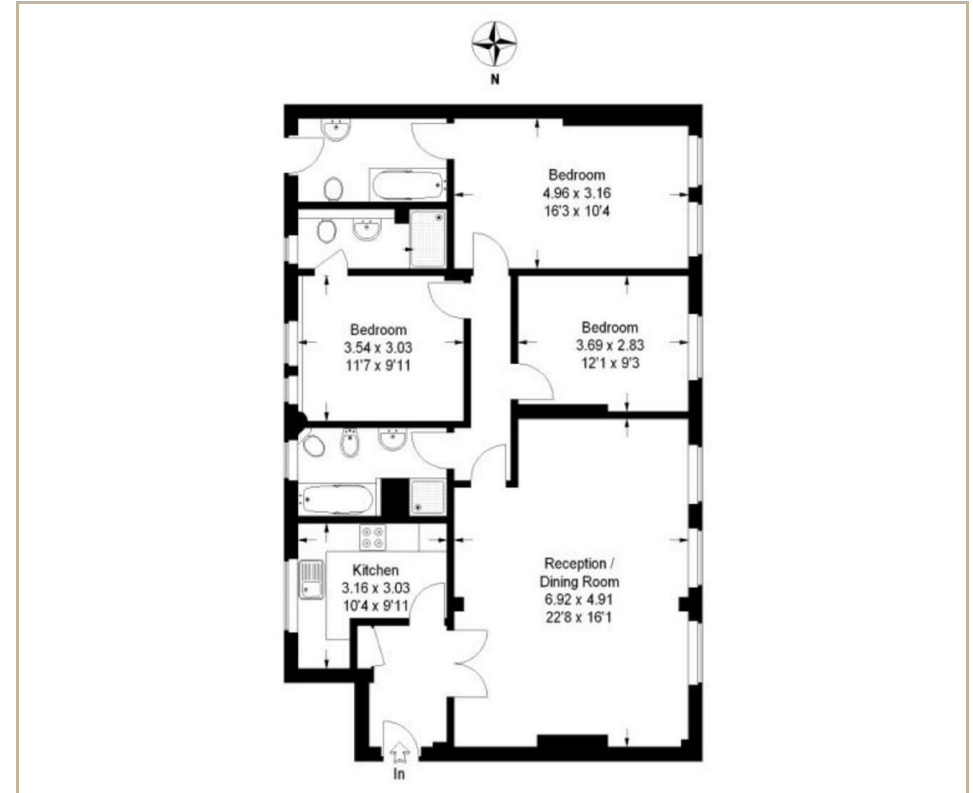
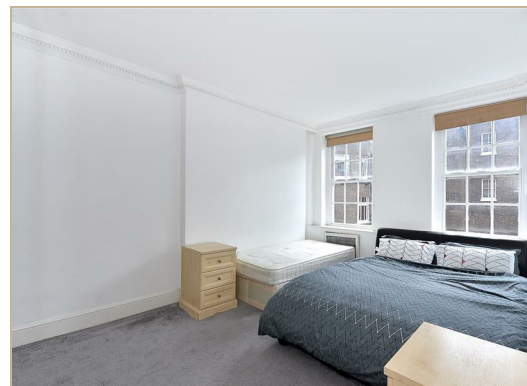
PROPERTY CONSULTANTS

Description

A three bedroom, three bathroom apartment situated on the fourth floor of this popular portered mansion block in Portman Square. This well proportioned apartment has an internal floor area covering 1,152 sq.ft (107 sq.m). The property comprises 3 bedrooms (2 en suites), a large reception dining room and a family bathroom, with the added benefit of access to the residents garden in Portman Square, along

with it's great location for shopping and transport links, just a few moments away from Oxford Street, Baker Street, Marble Arch and Bond Street.

Entrance Hall : Reception Room : Kitchen : 3 Bedrooms : 3 Bathrooms (2 Ensuite) : Access To Garden Square : Council Tax G : EPC D



TERMS

Leasehold : 22 March 2151 ie 128 years
Council Tax Westminster Band G

For Clarification we wish to inform prospective purchasers that we have prepared these sales particulars as a general guide. We have not carried out a survey, nor tested the services, appliances and specific fittings. Room sizes are approximate and rounded: they are taken between internal wall surfaces and therefore include cupboards/shelves, etc. Accordingly, they should not be relied upon for carpets and furnishings. Formal notice is given that all fixtures and fittings, carpeting, curtains/blinds and kitchen equipment, whether fitted or not, are deemed to be removable by the vendor unless specifically itemised within these sales particulars.

T. +44 (0) 20 7935 0011
E. enquire@napierwatt.co.uk
WWW.NAPIERWATT.CO.UK

NAPIER WATT
PROPERTY CONSULTANTS